



Orchard Drive, Theydon Bois, CM16

BUTLER & STAG



Finished to very exacting standards, this stunning three bedroom semi-detached bungalow has been fully modernised throughout by its current owners and offers a centralized position in the heart of Theydon Bois.



Freehold

- Three Bedroom Semi-Detached Bungalow
- Newly Refurbished
- Open Plan Lounge/Kitchen
- Off-Street Parking
- 68ft Rear Garden
- Central Village Location

Accommodation consists of a large open plan lounge/kitchen with bi-folds leading onto west facing rear garden, three double bedrooms and a family bathroom. There is also access to the a loft which offers ample amounts of opportunity to extend to create a further fourth bedroom with a second bathroom.

Externally, there is a 68 ft rear garden which is partially block paved to the early part with the rest laid to lawn. There is also two off-street parking spaces available to the front driveway with space to create a third if necessary.

Orchard Drive is one of the most sought after turnings in the ever popular village of Theydon Bois. The village is arranged around the green and offers a parade of shops, pubs and restaurants and offers easy access into Epping Forest, with its deer sanctuary. Transport links into London are excellent. Theydon Bois underground station is in walking distance and there are several well regarded state and private schools within easy reach. Local leisure facilities include golf courses, sports centres and a tennis club.

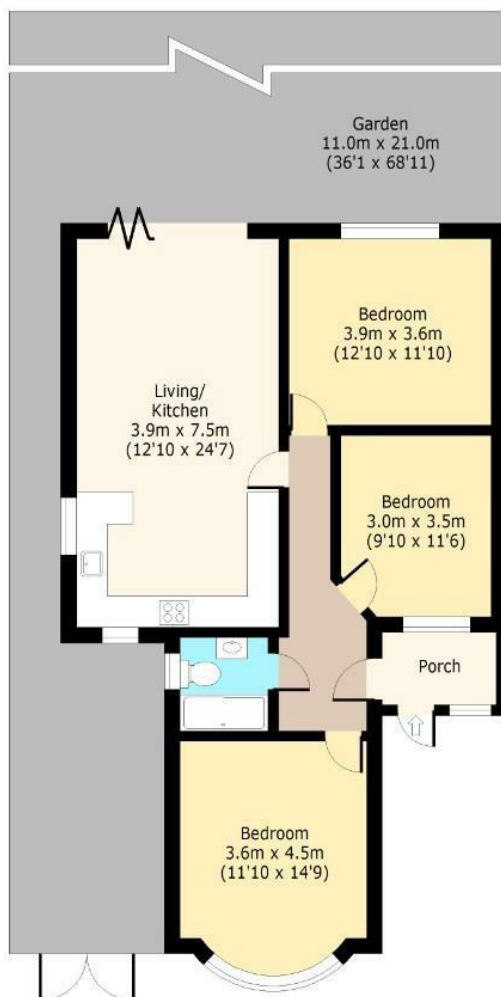




Orchard Drive

Ground Floor

Approx. 82.50 Sq. meters (888 Sq. feet) (Excluding Porch)
Approx. 85.56 Sq. meters (921 Sq. feet) (Including Porch)



Total area: approx. 85.56 Sq. meters 921 Sq. feet)
For illustration purposes only - not to scale
www.lpaplus.com

IMPORTANT NOTICE - These particulars have been prepared in good faith and they are not intended to constitute part of an offer or contract. We have not performed a structural survey on this property and the services, appliances and specific fittings have not been tested. All photographs, measurements, floor plans and distances referred to are given as a guide and should not be relied upon.

BUTLER & STAG

☎ 01992 667666

🏠 4 Forest Drive, Theydon Bois, Essex, CM16 7EY

✉ theydon@butlerandstag.com

www.butlerandstag.uk